



**MOFFETT** CANADA'S #1  
TRUCK-MOUNTED FORKLIFT

**ARW**  
QUALITY EDGE

**M8**

S E R I E S

**THE HIGH  
LIFT-CAPACITY  
SPECIALIST**





# READY FOR ANYTHING

## THE WORLD CLASS HEAVYWEIGHT CHAMPION

No matter which M8 model you choose, you know you'll be getting the strongest, top performing, best engineered and most reliable truck-mounted forklift in the world.

The M8 series is the high-lift capacity specialist. Ranging from 2500 kg to 3500 kg, it's built for the toughest, most challenging jobs.

Incredibly powerful, it's still compact enough to be carried on almost any truck or trailer. Plus the Moffett M8 is available with a whole range of options including choice of forks, lift-heights, tires and cabs for winter comfort.

The popular 4-way model easily negotiates tight areas with long loads. Reach right across the deck with Moffett M8 Pantograph with patented Lift Assist® arms for true same-side unloading.

## CANADA'S BEST SELLING FORKLIFT – FOR A LOT OF GOOD REASONS

What you get out of the Moffett M8 is a direct result of what we put into it – which is a lot. A lot of reliability. A lot of stability. A lot of maneuverability. A lot of versatility. And a whole lot of performance.

The M8 has a high capacity rating. It's nimble in rough terrain. It's built tough for the heaviest jobs in tough industries like building supply, residential, commercial construction and general cartage. And like all Moffett truck-mounted forklifts, the M8 is designed for easy integration with your truck or trailer, and one-person mounts and dismounts.



## PRODUCTIVITY + PROFITABILITY M8 STANDARD FEATURES THAT FEEL LIKE ADDED EXTRAS

- **NEW** powerful Kohler turbo diesel engine meets Tier 4 standards + lowers fuel costs – without a diesel particulate filter (DPF)
- Full-time all-wheel drive system for rough terrain + over-the-curb deliveries
- Hydraulic stabilizers with angled pads for improved stability, ground clearance + lifting capacity
- Industry standard left side seating + large operator compartment for added comfort + visibility
- Differential lock for improved traction
- Safety interlock seat belt + positive locking side door with armrest for added protection and comfort
- Complete work lights package for early + late night deliveries
- Lower & Go® fast-mount system lowers Moffett onto the kit at the touch of a button
- FOPS/ROPS certified overhead guard with grid design + rain shield for unobstructed views + added protection



NEW TIER 4 COMPLIANT KOHLER DPF-FREE TURBO ENGINE LOWERS FUEL COSTS + EMISSIONS

OVERHEAD GUARDS HAVE INCREASED OPERATOR SPACE AND FEATURE EASY-TO-REACH CONTROLS, NEW LEVEL ELECTRICS + PROTECTED DASHBOARD ENCLOSURE

HIGH-VISIBILITY MEANS SAFETY + CONTROL DAY IN AND DAY OUT





**M8** 55.3

STANDARD



## OUR STANDARD MODEL: FIRST IN LINE – 3 WAYS

THE M8 55.3 is the flagship of the M8 line. It's Canada's choice for a versatile truck-mounted forklift, and is famous for its winning combination of performance + reliability. Weighing in at just over 6000 lbs, it's our lightest M8 model.

## NEW ENGINE TECHNOLOGY WORTH BOASTING ABOUT

All M8 models boast a powerful new Tier 4-compliant Kohler 56 HP turbo diesel engine for smooth, clean, quiet operation. Designed with no particulate filter to clog, this DPF-free engine lowers emissions and fuel costs.

### AT A GLANCE

M8 55.3 / 55.3PL / 55.4 / 55.4PL	
Lifting Capacity	2495 kg / 5500 lb
Lift Height (std.)	3040 mm / 120 in
Engine Power T4 Final	42 kw / 56 hp

**M8** 55.3PL

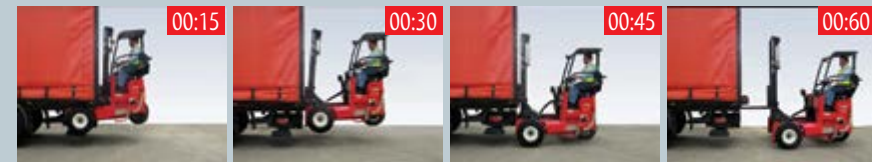
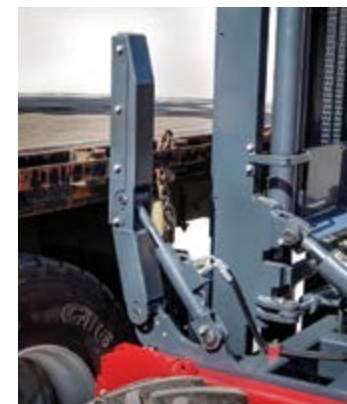
PANTOGRAPH REACH + LIFT ASSIST®

## PANTOGRAPH WITH LIFT ASSIST® MAKES SHORT WORK OF LONG REACHES

THE M8 55.3PL is designed for true same-side loading, reaching across the deck with a full load. Its Pantograph mast with patented Lift Assist® system has a long reach that makes short work of loading and unloading – no matter how restrictive the space you have to work in.



PATENTED LIFT ASSIST® ALLOWS THE OPERATOR TO SAFELY REACH ACROSS DECK AND PICK UP FULL CAPACITY, EVEN DOUBLE-STACKED



IN LESS THAN 1 MINUTE, ONE PERSON CAN MOUNT OR DISMOUNT THE MOFFETT TRUCK-MOUNTED FORKLIFT AND BE READY FOR WORK.



# M8

55.4  
55.4PL

4-WAY  
MULTI-DIRECTIONAL



## 4-WAY FIT FOR TIGHT SPACES

**THE M8 55.4** has 4-way multi-directional control that makes quick work out of moving long loads through narrow doorways, tight yards and storage areas. Easy 4-way operation at the push of a button.

**THE M8 55.4PL** has it all – the same 4-way manoeuvrability as the 55.4 with the added reach, power and control of a Pantograph mast with patented Lift Assist®.



4-WAY DESIGN LETS YOU MOVE  
LONG LOADS THROUGH TIGHT SPACES.



# M8

70.3  
80.3 / .4

# THE HEAVYWEIGHTS

70.3 / 80.3 HEAVY CAPACITY / 80.4 - 4-WAY MULTI-DIRECTIONAL

## BIG – THE M8 70.3 7000 LBS

**THE M8 70.3** is Canada's choice for a versatile, heavy duty truck-mounted forklift. With it's higher capacity, stability and rough terrain capabilities, its ideal for the toughest job site.

## BIGGER – THE M8 80.3 8000 LBS

**THE M8 80.3** is the highest capacity heavy-duty truck-mounted forklift in Canada. It's found success in utility/ general cartage, moving and storage, and container handling – anywhere huge, tough jobs are found.

## BIGGER – 4 WAYS THE M8 80.4

**THE M8 80.4** delivers all the power-packed advantages of the 80.3: capacity, stability, performance and a T4 Final compliant Kohler engine, *plus* 4-way directional capability for maximum maneuverability with long load lengths.

### AT A GLANCE

#### M8 70.3

Lifting Capacity	3175 kg / 7000 lb
Lift Height (std.)	3040 mm / 120 in
Engine Power T4 Final	42 kw / 56 hp

#### M8 80.3 / 80.4

Lifting Capacity	3629 kg / 8000 lb
Lift Height (std.)	3040 mm / 120 in
Engine Power T4 Final	42 kw / 56 hp





## **MOFFETT + ARW**

### **It's always a win win**

When you invest in a Moffett forklift, you're not getting just another machine. You're getting the experience and expertise of the world's #1 truck-mounted forklift manufacturer and their commitment to the best in forklift design, engineering, performance + reliability .

The quality of Moffett forklifts is solidly backed by a Canada-wide service and distributor network.

### **ARW Truck Equipment Ltd.**

Calgary 1 888 843 6111 . Edmonton 1 866 840 9365  
[www.arwtruck.com](http://www.arwtruck.com)

**ARW** TRUCK EQUIPMENT LTD.

---